

# CATEGORY REPORT

## Category

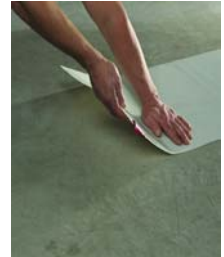
## MAT

Vendor:  
 MMS Code **VLO-4457653**  
 Vendor Code **4457653**  
 Unit of Measure **EACH**  
 Case Pack: **EACH**  
 Case Wgt: **0.000**  
 Cube: **0.000**  
 UPC Code:  
 UNSPSC **0**

### 3M CLEAN WALK MAT 5838 24" X 36" WHITE 4 MATS OF 60 SHEETS EACH

Vendor:  
 MMS Code  
 Vendor Code **5838**  
 Unit of Measure **CASE**  
 Case Pack: **4-60/CASE**  
 Case Wgt: **0.000**  
 Cube: **0.000**  
 UPC Code: **000212000957406**  
 UNSPSC **0**

3M™ Clean-Walk Mats feature a multi-sheeted adhesive system that captures dirt on contact from shoe soles, wheels and other passing objects. Each sheet is individually tabbed and numbered for quick and easy removal exposing a fresh, ready-to-use sheet.



### 3M CLEAN-WALK MAT 5830 18" X 36" 30 SHEETS/MAT, 4 MATS/CASE

Vendor:  
 MMS Code **MCO-55730**  
 Vendor Code **55730**  
 Unit of Measure **CASE**  
 Case Pack: **4/CASE**  
 Case Wgt: **0.000**  
 Cube: **0.000**  
 UPC Code:  
 UNSPSC **0**

An adhesive coated mat that is used in removing dirt from the bottom of shoes, wheels or any passing objects. To expose an adhesive surface, just peel the top sheet back.



### 3M CLEAN-WALK MAT 5830 18" X 46" 30 SHEETS/MAT, 4 MATS/CASE

Vendor:  
 MMS Code **MCO-96835**  
 Vendor Code **96835**  
 Unit of Measure **CASE**  
 Case Pack: **4/CASE**  
 Case Wgt: **0.000**  
 Cube: **0.000**  
 UPC Code:  
 UNSPSC **0**

An adhesive coated mat that is used in removing dirt from the bottom of shoes, wheels or any passing objects. To expose an adhesive surface, just peel the top sheet back.



# CATEGORY REPORT

## Category

## MAT

### 3M CLEAN-WALK MAT 5830 25" X 45" 30 SHEETS/MAT, 4 MATS/CASE

Vendor:  
 MMS Code **MCO-55728**  
 Vendor Code **55728**  
 Unit of Measure **CASE**  
 Case Pack: **4/CASE**  
 Case Wgt: **0.000**  
 Cube: **0.000**  
 UPC Code:  
 UNSPSC **0**

An adhesive coated mat that is used in removing dirt from the bottom of shoes, wheels or any passing objects. To expose an adhesive surface, just peel the top sheet back.



### 4' X 6' NOMAD 6050 EBONY MEDIUM BACKED SCRAPER MAT

Vendor:  
 MMS Code **MCO-17790BLA**  
 Vendor Code **17790BLA**  
 Unit of Measure **EACH**  
 Case Pack: **EACH**  
 Case Wgt: **16.580**  
 Cube: **1.757**  
 UPC Code: **5 00 48011 17790 3**  
 UNSPSC **0**

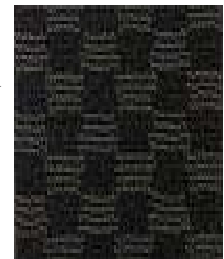
Designed to be the first mat of a 3M entrance matting system, 3M Nomad Scraper Matting 6050 has vinyl loops that scrape dirt and moisture from shoes. Its backing keeps dirt and water off the floor underneath when used for indoor applications. Designed for medium traffic facility entrances.



### 4' X 6' NOMAD 6500, MEDIUM TRAFFIC, SLATE

Vendor:  
 MMS Code **MCO-13528BLA**  
 Vendor Code **13528**  
 Unit of Measure **EACH**  
 Case Pack: **EACH**  
 Case Wgt: **21.210**  
 Cube: **1.628**  
 UPC Code: **50048011263385**  
 UNSPSC **0**

3M Enhance Matting 6500 features a patented blend of different sized polypropylene fibers for exceptional dirt and water removal. The coarse fibers scrape off small soil particles not removed by the scraper matting. And the tough, looped fibers wick away water, making it an ideal last mat of a 3M entrance matting system.



### BOOT TRAY 16" X 40" 1" TALL

Vendor:  
 MMS Code **NXT-342109**  
 Vendor Code **342109**  
 Unit of Measure **EACH**  
 Case Pack: **EACH**  
 Case Wgt: **0.000**  
 Cube: **0.000**  
 UPC Code:  
 UNSPSC **0**

Protect your hardwood floors and carpeting from muddy shoes and slushy boots by keeping this Large Boot Tray at your entrance. Made of thick rubber, our 40"-long Large Boot Tray will hold up to five pairs of adult boots and shoes. Plus, this extra-large boot tray has a ridged surface and thick rim to keep water from leaking onto your floors. Place this black rubber mat in your office to capture melting snow, and keep that watery mess off your floor.

